

A Family Community with everything you always wanted



all of the amenities at
AFFORDABLE RENTS

Many families don't know that they can qualify for a spacious affordable apartment at Aspen Court

Our affordable rents are designed to provide beautiful quality apartments that meet the needs of families on a limited income.

Call our office today for a personal tour and find out if you may qualify for a 2, 3 or 4 bedroom apartment at Aspen Court

Please call our office today
for more details.
435-750-0151

Logan, Utah, is located in beautiful Cache Valley, only 85 miles north of Salt Lake City in a pristine, green valley along US Hwy 89, the shortest and most scenic route to Yellowstone.

Don't miss Logan National Scenic Byway, especially when fall colors are on display. At the highway summit, you can see a spectacular view of turquoise Bear Lake. The lake is a boating and fishing destination in the summer and a snowmobile destination in the winter.

Logan is known for its outdoor recreation opportunities: camping, fishing, mountain biking, boating and hiking. In the winter, ski at Beaver Mountain Ski resort or snowmobile in Logan Canyon. Cache Valley hosts several large events: the Top of Utah Marathon, Cache Valley Cruise-In Car Show, the Utah Festival Opera Company and the Festival of the American West.



Find your home in Logan at
Aspen Court.

ASPEN  COURT

550 W 1800 North
Logan UT 84341
435-750-0151

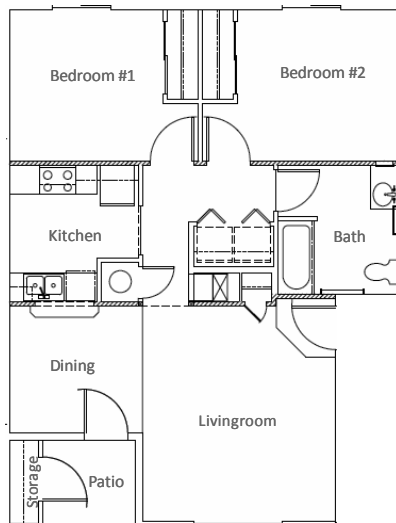
Rent Affordable
2, 3 & 4 Bedroom Apartments

A Somerset Pacific LLC Managed Property





TWO BEDROOM/ONE BATH 800 SQFT

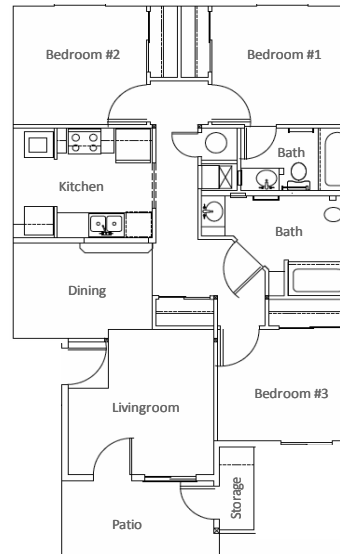


Apartment Amenities

- Large Bright Rooms
- Spacious Design
- Energy Star Appliances
- Washer & Dryer in Unit
- Balcony/Patio
- Ceiling Fans
- Private Lockable Storage
- Efficient A/C & Heating
- Cable & Phone Ready
- No Charge for Water Service
- No Charge for Trash Removal



THREE BEDROOM /TWO BATH 1050 SQFT



Community Amenities

- Beautifully Landscaped
- Off Street Parking
- Guest Parking
- Fitness Center
- Community Activity Room
- Computer Center
- Picnic/BBQ Areas
- Playground
- Handicap Accessible
- On Site Management
- 24 Hour Emergency Maintenance



FOUR BEDROOM/TWO BATH 1200 SQFT

